

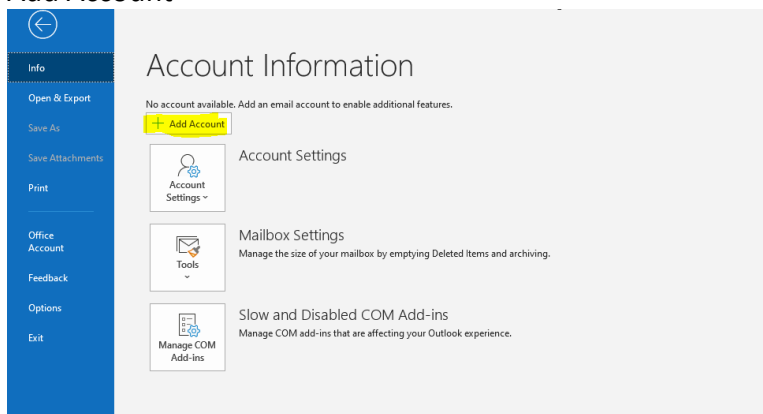
## OVERVIEW

The steps below will walk through the process of setting up an Ice Warp email account in MS Outlook. The information needed/good to know in setup for each account includes

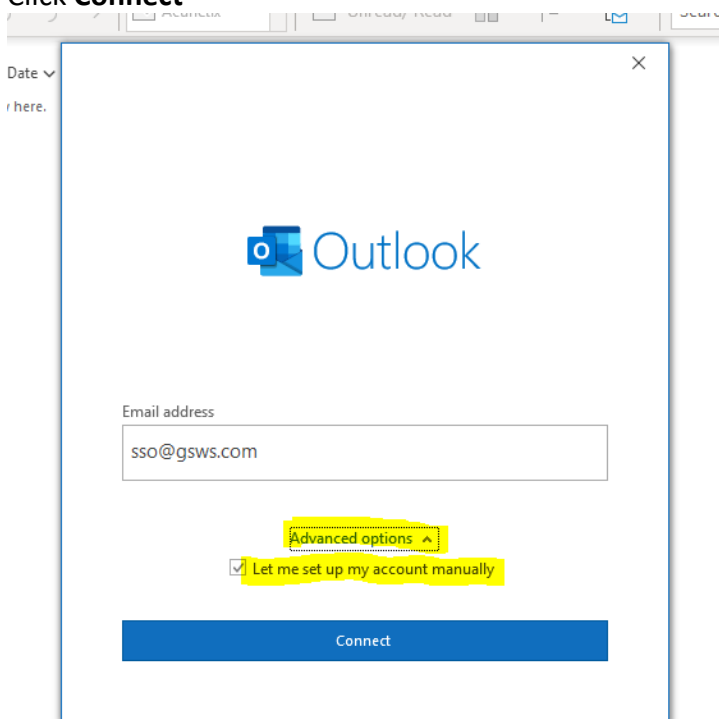
- domain name
- email address/username
- account password
- incoming/outgoing mail server: mail.domainname.com
- outgoing smtp port: 587
- incoming imap port: 993
- incoming pop port: 995

## SETUP INSTRUCTIONS

1. Open MS Outlook
2. File > Account
3. Add Account



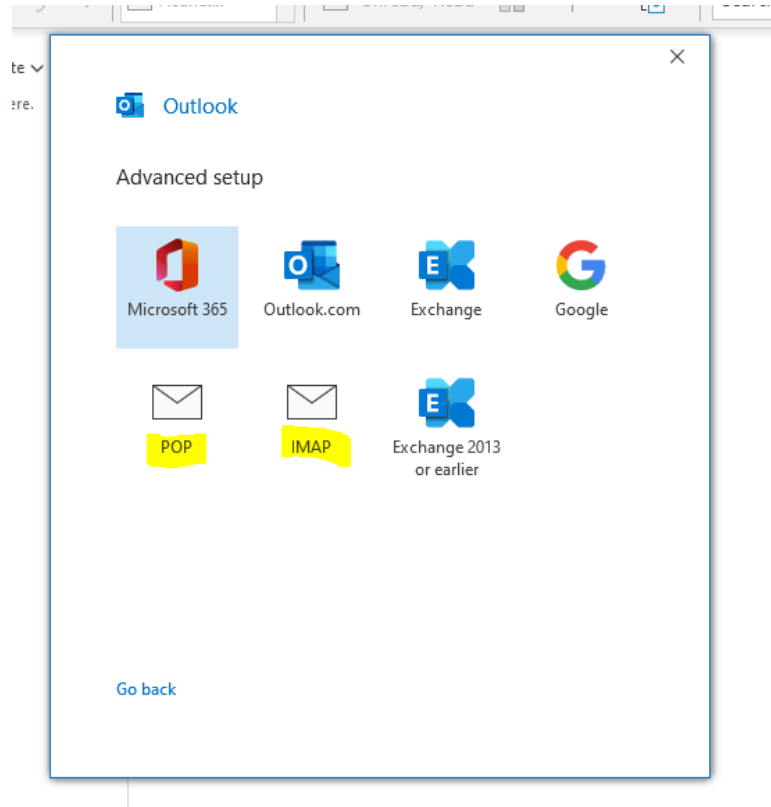
4. Choose **Advanced Options** / Let me set up my account manually
5. Click **Connect**



6. Under Advanced Setup, select POP or IMAP (Whichever you prefer)  
POP will download all email from the server into your Outlook account  
IMAP will leave email on the server, so it can be accessed by multiple devices  
\*If helpful, more information about POP and IMAP can be found here:  
<https://www.name.com/support/articles/205935497-Understanding-the-difference-between-POP-and-IMAP>

These instructions show how to setup using IMAP

7. Select **IMAP**



8. In the **IMAP Account Settings**, enter  
Incoming Mail Server: mail.yourdomainname.com  
Port 993  
Encryption Method: SSL/TLS

Outgoing Mail Server: mail.yourdomainname.com  
Port 587  
Encryption Method: Auto

Check Require logon using Secure Password Authentication (SPA) on Incoming and Outgoing mail

9. Click **Next**

The screenshot shows an "IMAP Account Settings" dialog box for the email address sso@gsws.com. It is divided into two sections: "Incoming mail" and "Outgoing mail".

**Incoming mail:**  
Server: mail.gsws.com  
Port: 993  
Encryption method: SSL/TLS  
 Require logon using Secure Password Authentication (SPA)

**Outgoing mail:**  
Server: mail.gsws.com  
Port: 587  
Encryption method: Auto  
 Require logon using Secure Password Authentication (SPA)

At the bottom, there are two buttons: "Go back" and "Next".

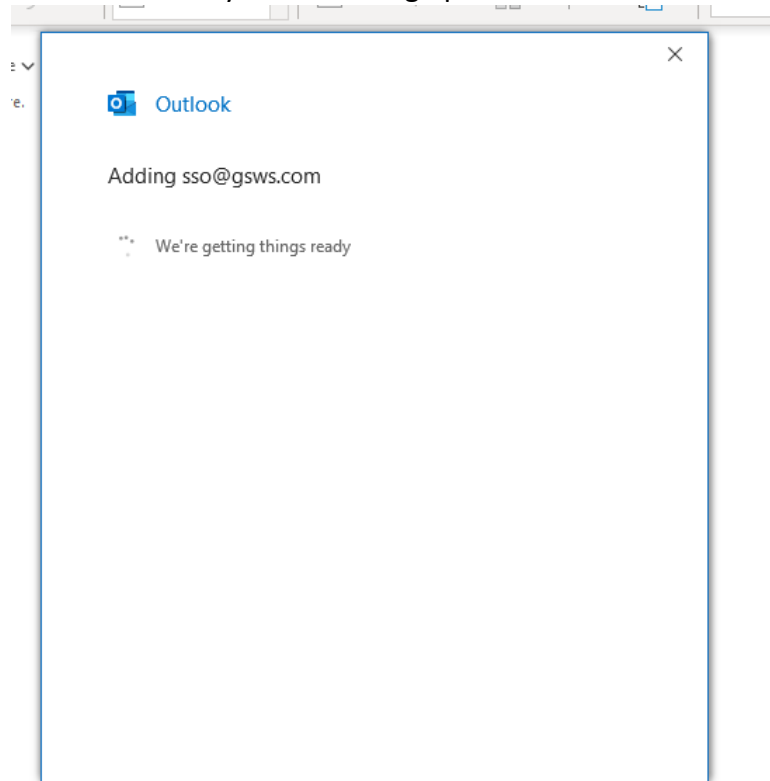
10. Enter the account Password

11. Click **Connect**

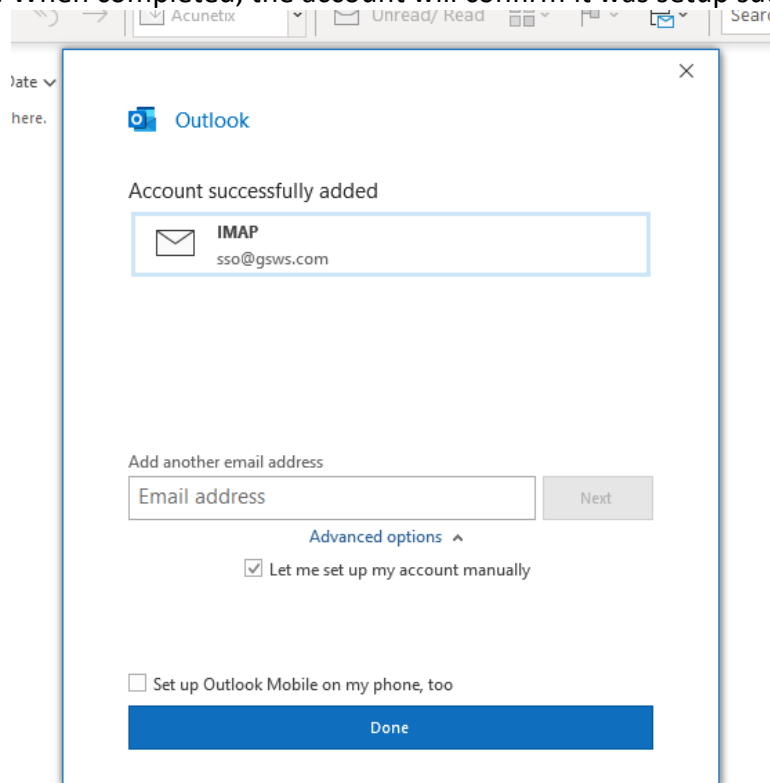
The screenshot shows the "IMAP Account Settings" dialog box for sso@gsws.com. The "Incoming mail" and "Outgoing mail" sections are hidden, and a "Password" field is visible. The password is masked with asterisks. There is a small eye icon to the right of the password field to toggle visibility.

At the bottom, there are two buttons: "Go back" and "Connect".

## 12. Outlook will tell you it is setting up the account



## 13. When completed, the account will confirm it was setup successfully



## 14. Click Done, and you can return to the inbox

